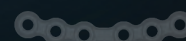
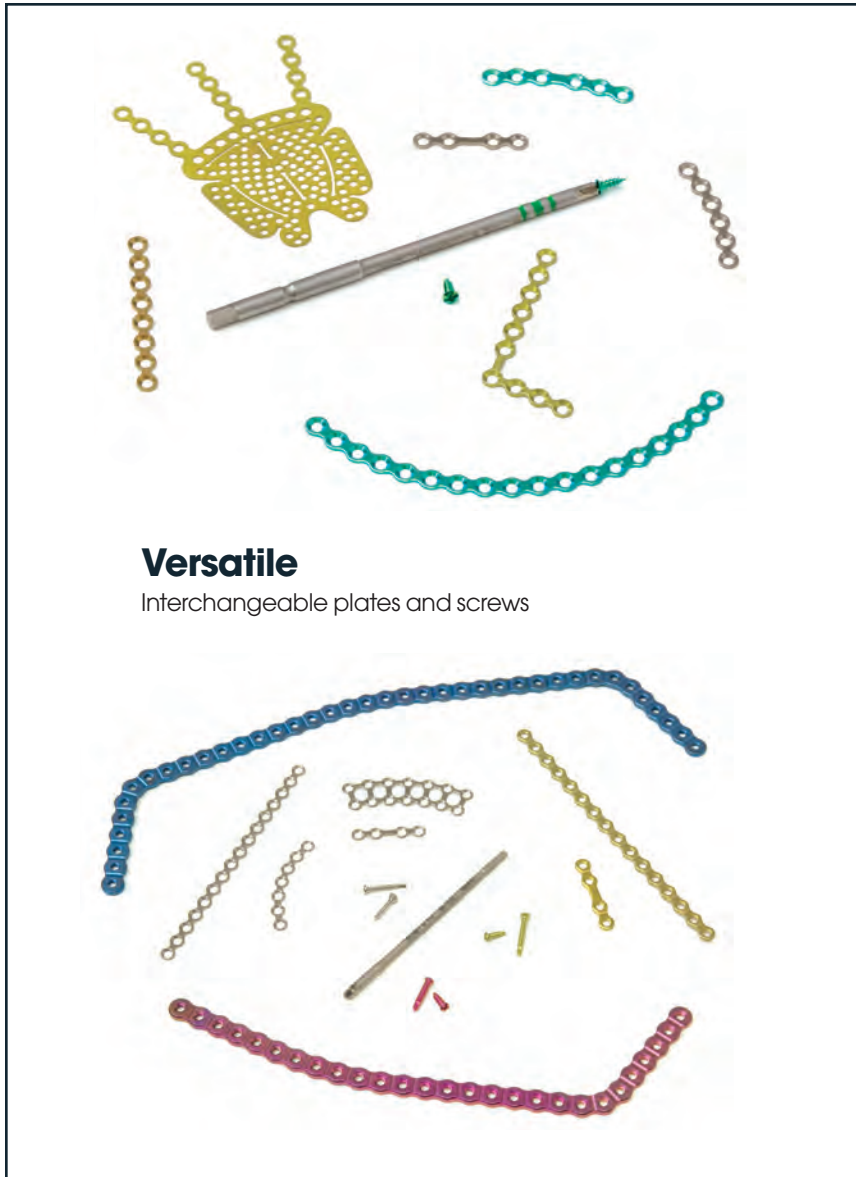


# Lorenz® Plating System TraumaOne™ 1.5mm/2.0mm/2.3mm



**BIOMET**<sup>®</sup>  
MICROFIXATION  
Anticipate. Innovate.™

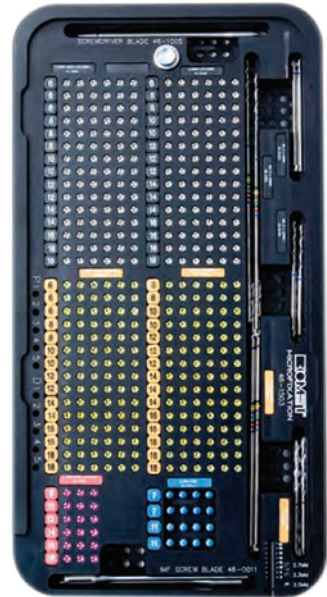
# TraumaOne™: The streamlined, all-in-one plating system.





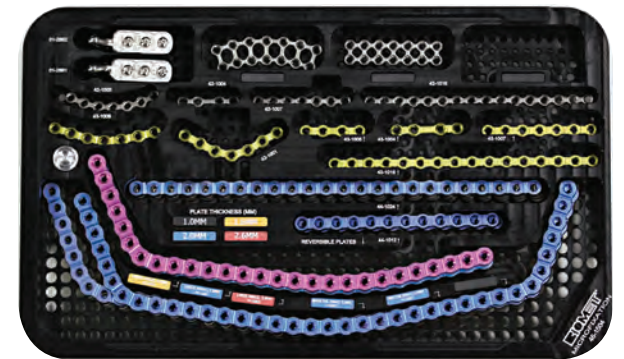
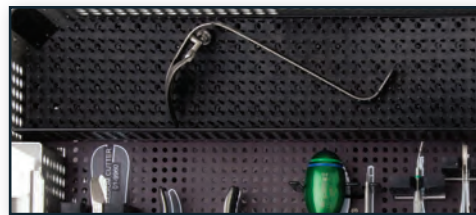
## Streamlined

Dedicated plate and screw implant containers



## Customizable

Extra container pockets and specialized areas for set customization



# Clinical Advantages

## Trocar System



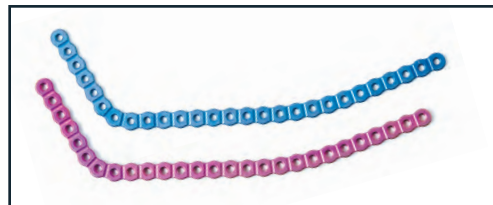
Easy-to-use system features a built-in drill guide and fiber-optic cheek retractor. Screw legend for calibrated drills located on the underside of lid.

## IMF Technology



Specialized blade provides enhanced stability during screw insertion.

## Reversible Angle Plates

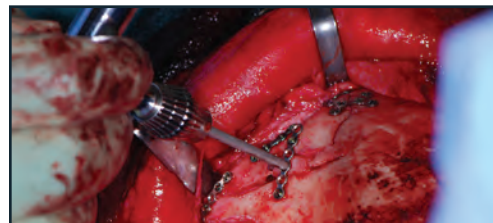


Simplifies plate selection and reduces hospital inventory.

## Bone Reduction Blade



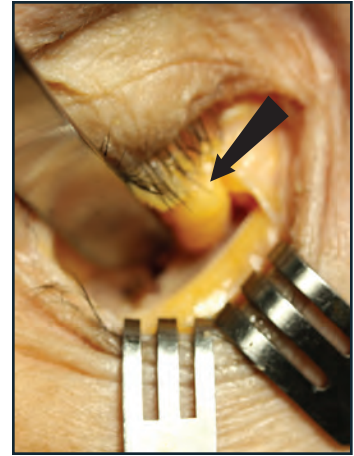
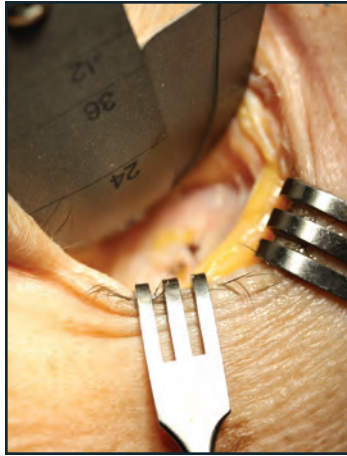
Instrument allows for simple reduction of bony fragments. A T-handle is provided for added control.



Clinical photo courtesy of Herman Kao, DDS, MD

# Specialty Instruments

## Fernandes Orbital Retractor (SP-2243)



The working end provides anatomical landmark positions and is easily adjusted to accommodate different orbital volumes. This versatile instrument provides improved retraction of the orbital fat in comparison to a malleable retractor.

## Full Guard (SP-2244)



Clinical photo courtesy of Jason Potter, DDS, MD

A guard aids in the protection of the vascular pedicle while the cutting guide provides saw control. The instrument provides for enhanced accuracy when performing osteotomies for free fibula reconstruction.

What fascinates you about the body is also what drives us. That's why we're always pushing the boundaries of engineering to make products that help you keep the human form as glorious as it was intended. To learn more about our breadth of products, call 800-874-7711 or visit us online at [biometmicrofixation.com](http://biometmicrofixation.com). We'd love to join you in a conversation about the future.

**BIOMET**<sup>®</sup>  
MICROFIXATION  
Anticipate. Innovate.<sup>™</sup>

For more information on TraumaOne<sup>™</sup>, please contact us at:

**GLOBAL HEADQUARTERS**

1520 Tradeport Drive • Jacksonville, FL 32218-2480  
Tel (904) 741-4400 • Toll-Free (800) 874-7711 • Fax (904) 741-4500 • Order Fax (904) 741-3059  
[www.biometmicrofixation.com](http://www.biometmicrofixation.com)

**EUROPE**

Toermalijnring 600 • 3316 LC Dordrecht • The Netherlands  
Tel +31 78 629 29 10 • Fax 31 78 629 29 12

As the manufacturer of this device, Biomet Microfixation does not practice medicine and does not recommend this product for use on a specific patient. The surgeon who performs any implant procedure must determine the appropriate device and surgical procedure for each individual patient. Information contained in this brochure is intended for surgeon or distributor information only and is not intended for patient distribution. All surgeries carry risks. For additional information, and information on these risks and warnings, please see the appropriate package insert or visit our web site at [www.biometmicrofixation.com](http://www.biometmicrofixation.com) or call 1-800-874-7711.

TraumaOne<sup>™</sup> is a trademark of Biomet.